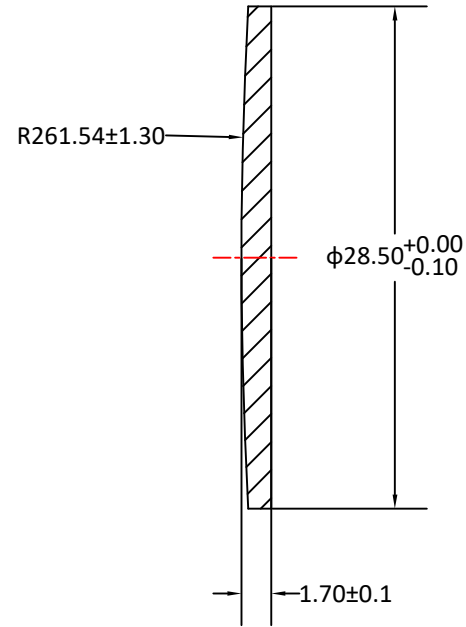
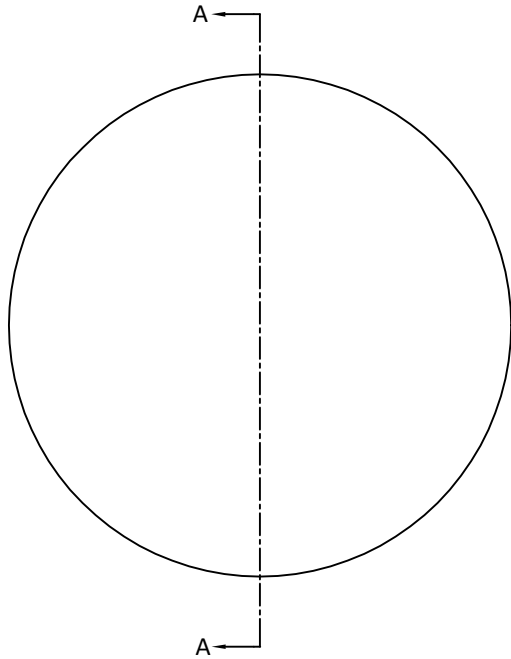



| RADIUS | R TOL | POWER | IRRG | CA | DIA | DIA TOL | MATERIAL | INDEX | CT | CT TOL |
|-----------|-------|-------|------|-----|-------|----------|----------|--------|------|--------|
| 261.54 CX | ±1.30 | 5 | 1 | 90% | 28.50 | +0/-0.10 | H-K9L | 517642 | 1.70 | ±0.10 |
| Plano | - | 5 | 1 | 90% | | | | | | |



SECTION A-A

Notes:

1. ALL DIMENSIONS IN MM
2. TOLERANCE UNLESS SPECIFIED ± 0.10
3. MATERIAL: OPTICAL GLASS H-K9L
4. MANUFACTURE PER MIL-PRF-13830
5. POLISH TO TESTPLATE WITHIN POWER AND IRREGULARITY INDICATED (FRINGES)
6. FOCAL LENGTH(EFL): 500.00±1%
7. SURFACE QUALITY : 40-20 SCRATCH-DIG
8. CHAMFER EDGES: 0.5×45°MAX UNLESS SPECIFIED
9. CENTRATION TOLERANCE: 2.0' MINUTES MAX
10. COATING: UNCOATED

| | | | | | | |
|--------------------------------------|--|-------------|------------|---|--|--------------|
| UNLESS OTHERWISE SPECIFIED: | | NAME | DATE |  | | |
| DIMENSIONS ARE IN mm | | DRAWN | Eva Du | | | 7.10.24 |
| TOLERANCES: | | CHECK | Sally Song | 7.19.24 | TITLE: DIAMETER 28.50MM, EFL 500.00MM, H-K9L PLANO CONVEX LENSES | |
| FRACTIONAL ± | | ENG APPR. | | | | |
| ANGULAR: ±3 ARC MIN | | MFG APPR. | | | | |
| TWO PLACE DECIMAL: ±0.10 | | QA | | | | |
| THREE PLACE DECIMAL: ±0.05 | | COMMENTS | | | | |
| INTERPRET GEOMETRIC TOLERANCING PER: | | | | SIZE | DWG.NO. | REV |
| MATERIAL H-K9L | | | | A | L-PLCX-500_28 | 0 |
| FINISH | | | | SCALE: | WEIGHT: | SHEET 1 OF 1 |
| DO NOT SCALE DRAWING | | PROJECT NO. | | | | |