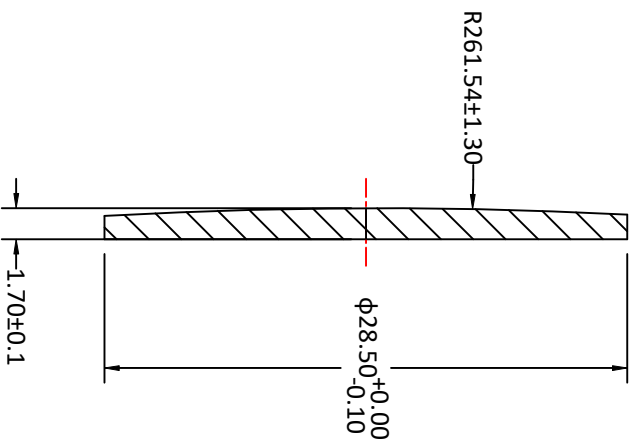
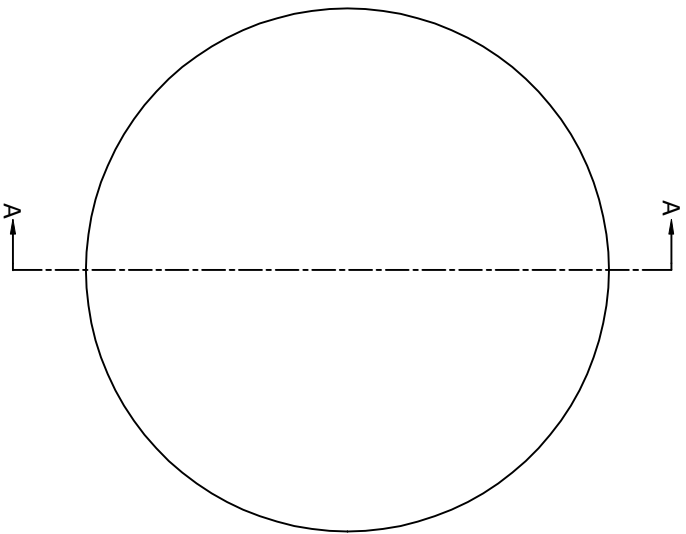


RADIUS	R TOL	POWER	IRRG	CA
261.54 CX	±1.30	5	1	90%
Plano	-	5	1	90%

DIA	DIA TOL	MATERIAL	INDEX	CT	CT TOL
28.50	+0/-0.10	H-K9L	517642	1.70	±0.10



SECTION A-A

- Notes:
1. ALL DIMENSIONS IN MM
 2. TOLERANCE UNLESS SPECIFIED ± 0.10
 3. MATERIAL: GRADE B, FA PER MIL-G-174, CDGM OR EQUIVALENT, ROHS COMPLIANT
 4. MANUFACTURE PER MIL-PRF-13830
 5. POLISH TO TEST PLATE WITHIN POWER AND IRRREGULARITY INDICATED (FRINGES)
 6. FOCAL LENGTH(EFL): 500.00±1%
 7. SURFACE QUALITY : 40-20 SCRATCH-DIG
 8. CHAMFER EDGES: 0.5×45° MAX UNLESS SPECIFIED
 9. CENTRATION TOLERANCE: 2.0' MINUTES MAX
 10. COATING: UNCOATED

UNLESS OTHERWISE SPECIFIED:			
DIMENSIONS ARE IN mm		DRAWN	NAME
TOLERANCES:			Sally Song
FRACTIONAL ±		CHECK	DATE
ANGULAR: ±3 ARC MIN		ENG APPR.	7.10.24
TWO PLACE DECIMAL: ±0.10		MFG APPR.	
THREE PLACE DECIMAL: ±0.05		QA	
INTERPRET GEOMETRIC TOLERANCING PER:		COMMENTS	
MATERIAL			
H-K9L			
FINISH			
DO NOT SCALE DRAWING	PROJECT NO.	SCALE:	WEIGHT:
		A	
		L-PX001050028Y	
			REV
			0
TITLE:		MANUFACTURER FROM CHINA	
DIAMETER 28.50MM, EFL 500.00MM, H-K9L PLANO CONVEX LENSES			