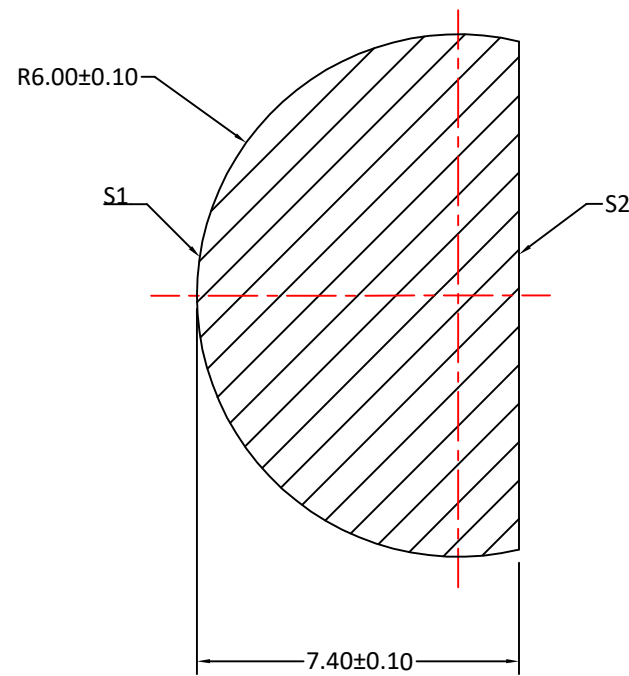
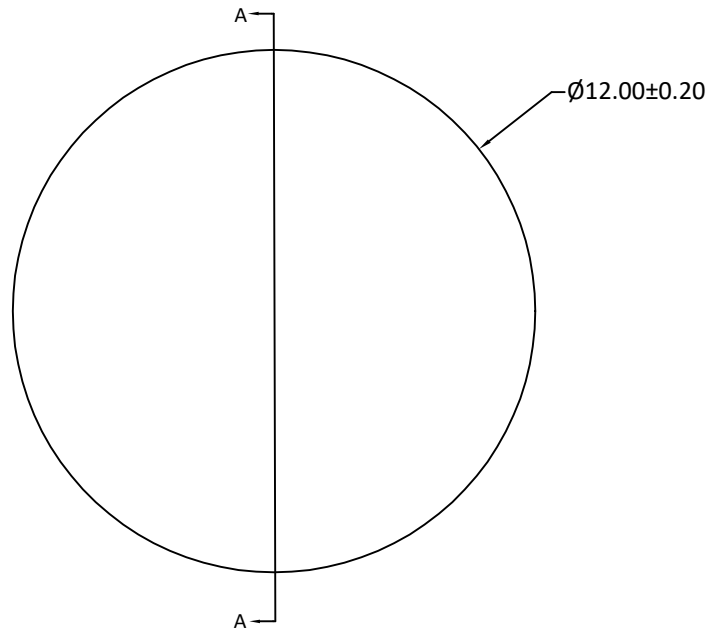



RADIUS	R TOL	POWER	IRRG	CA	DIA	DIA TOL	MATERIAL	INDEX	CT	CT TOL
6.00	±0.10	-	-	-	12.00	+0/-0.20	Silicon		7.40	±0.10
Plano	-	-	-	-						



SECTION A-A

Notes:

1. ALL DIMENSIONS IN MM
2. MATERIAL: HRFZ-SILICON, RESISTANCE > 10kΩ\*cm
3. S1: HYPER-HEMISPHERICAL, POLISHED
4. S2: FLAT, POLISHED
5. CLEAR APERTURE: ≥90% OF DIAMETER
6. SURFACE QUALITY: 60-40 SCRATCH-DIG
7. THICKNESS TOLERANCE: 0.10mm
8. SURFACE ACCURACY: ±0.01mm DEVIATION FROM IDEAL SPHERE AND PLANE

UNLESS OTHERWISE SPECIFIED:		NAME	DATE			
DIMENSIONS ARE IN mm TOLERANCES: FRACTIONAL ± ANGULAR: ±3 ARC MIN TWO PLACE DECIMAL: ±0.10 THREE PLACE DECIMAL: ±0.05	DRAWN	Sally Song	12.04.24			
	CHECK					
	ENG APPR.					
	MFG APPR.					
INTERPRET GEOMETRIC TOLERANCING PER:	QA			TITLE: 12.00 DIAMETER, 7.40 THICKNESS TERAHERTZ SILICON HYPER BALL LENS		
MATERIAL SILICON	COMMENTS			SIZE <b>A</b>	DWG.NO. <b>CLZ-Hyper-12-740</b>	REV <b>0</b>
FINISH				DO NOT SCALE DRAWING	PROJECT NO.	SCALE: