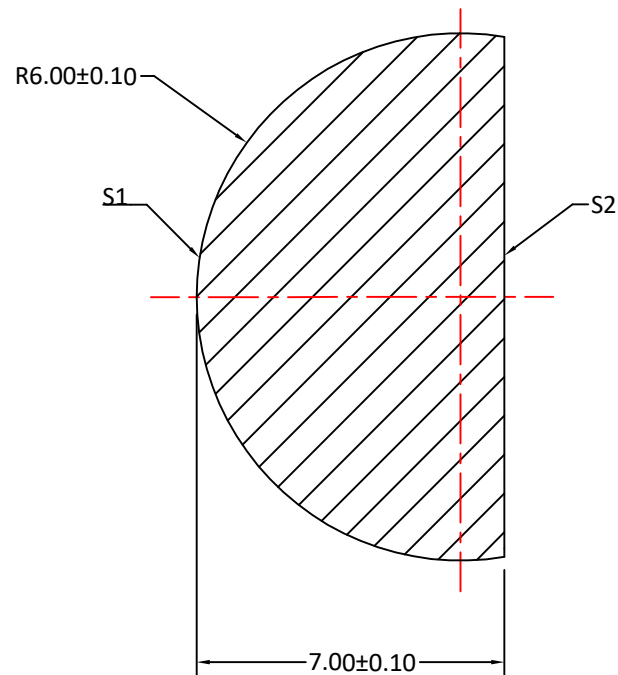
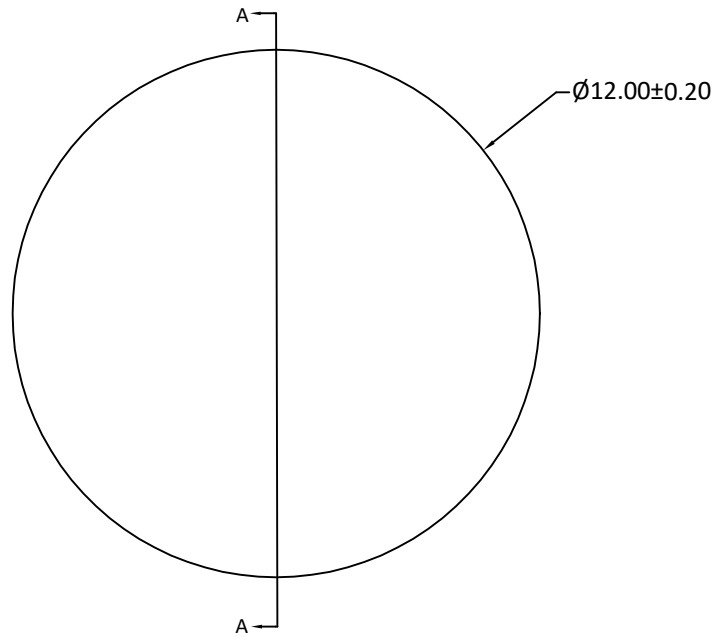


RADIUS	R TOL	POWER	IRRG	CA	DIA	DIA TOL	MATERIAL	INDEX	CT	CT TOL
6.00	±0.10	-	-	-	12.00	+0/-0.20	Silicon		7.00	±0.10
Plano	-	-	-	-						



SECTION A-A

Notes:

1. ALL DIMENSIONS IN MM
2. MATERIAL: HRFZ-SILICON, RESISTANCE > 10kΩ\*cm
3. S1: HYPER-HEMISPHERICAL, POLISHED
4. S2: FLAT, POLISHED
5. CLEAR APERTURE: ≥90% OF DIAMETER
6. SURFACE QUALITY: 60-40 SCRATCH-DIG
7. THICKNESS TOLERANCE: 0.10mm
8. SURFACE ACCURACY: ±0.01mm DEVIATION FROM IDEAL SPHERE AND PLANE

UNLESS OTHERWISE SPECIFIED:		NAME	DATE	
DIMENSIONS ARE IN mm		DRAWN	Sally Song	
TOLERANCES:		CHECK		<b>TITLE:</b> 12.00 DIAMETER, 7.00 THICKNESS TERAHERTZ SILICON HYPER BALL LENS
FRACTIONAL ±		ENG APPR.		
ANGULAR: ±3 ARC MIN		MFG APPR.		
TWO PLACE DECIMAL: ±0.10		QA		
THREE PLACE DECIMAL: ±0.05		COMMENTS		SIZE <b>A</b> DWG.NO. <b>CLZ-Hyper-12-700</b> REV <b>0</b>
INTERPRET GEOMETRIC TOLERANCING PER:				SCALE:
MATERIAL SILICON				WEIGHT:
FINISH				SHEET 1 OF 1
DO NOT SCALE DRAWING		PROJECT NO.		