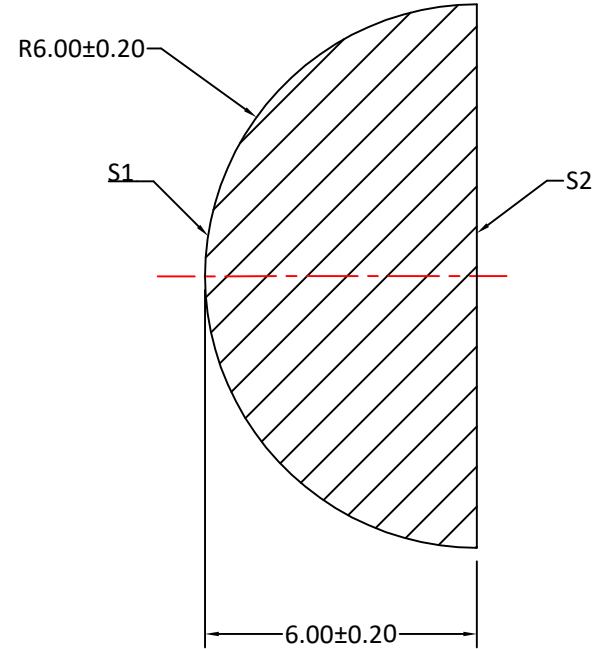
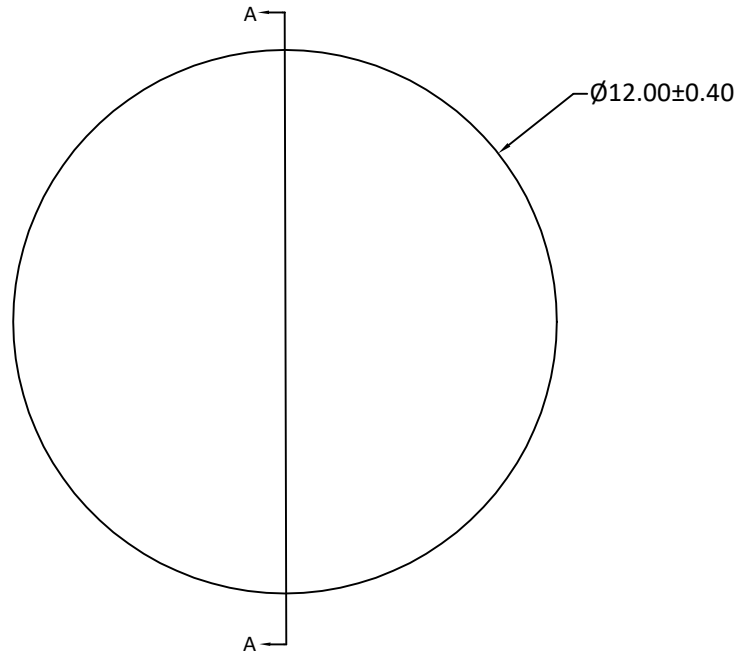



RADIUS	R TOL	POWER	IRRG	CA	DIA	DIA TOL	MATERIAL	INDEX	CT	CT TOL
6.00	±0.20	-	-	-	12.00	+0/-0.40	Silicon		6.00	±0.20
Plano	-	-	-	-						



SECTION A-A

Notes:

1. ALL DIMENSIONS IN MM
2. MATERIAL: HRFZ-SILICON, RESISTANCE  $> 10\text{k}\Omega \cdot \text{cm}$
3. S1: HYPER-HEMISPHERICAL, POLISHED
4. S2: FLAT, POLISHED
5. CLEAR APERTURE:  $\geq 90\%$  OF DIAMETER
6. SURFACE QUALITY: 60-40 SCRATCH-DIG
7. THICKNESS TOLERANCE: 0.20mm
8. SURFACE ACCURACY:  $\pm 0.01\text{mm}$  DEVIATION FROM IDEAL SPHERE AND PLANE

UNLESS OTHERWISE SPECIFIED:		NAME	DATE				
DIMENSIONS ARE IN mm TOLERANCES: FRACTIONAL $\pm$ ANGULAR: $\pm 3$ ARC MIN TWO PLACE DECIMAL: $\pm 0.10$ THREE PLACE DECIMAL: $\pm 0.05$		DRAWN	Sally Song			12.04.24	TITLE: 12.00 DIAMETER, 6.00 THICKNESS TERAHERTZ SILICON HEMISPHERICAL BALL LENS
INTERPRET GEOMETRIC TOLERANCING PER:		CHECK					
MATERIAL SILICON		ENG APPR.					
FINISH		MFG APPR.					
DO NOT SCALE DRAWING		COMMENTS			SIZE DWG.NO. <b>A</b> CLZ-HEM-12-600	REV <b>0</b>	
		PROJECT NO.			SCALE:	WEIGHT:	SHEET 1 OF 1