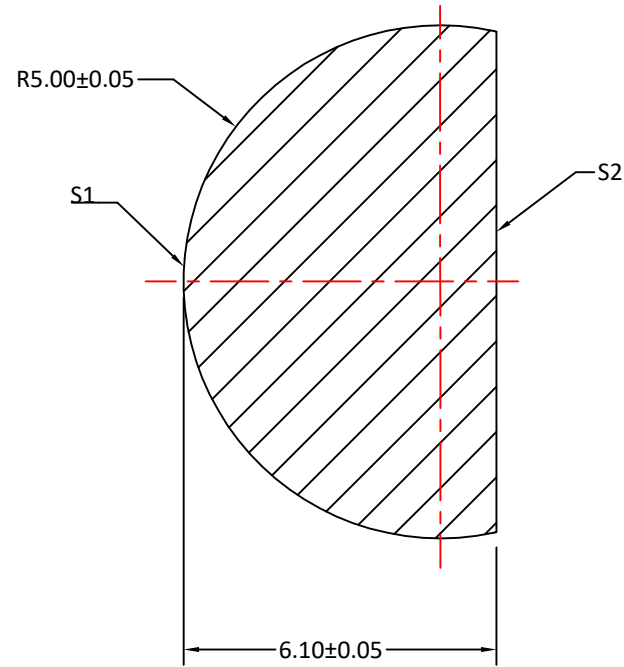
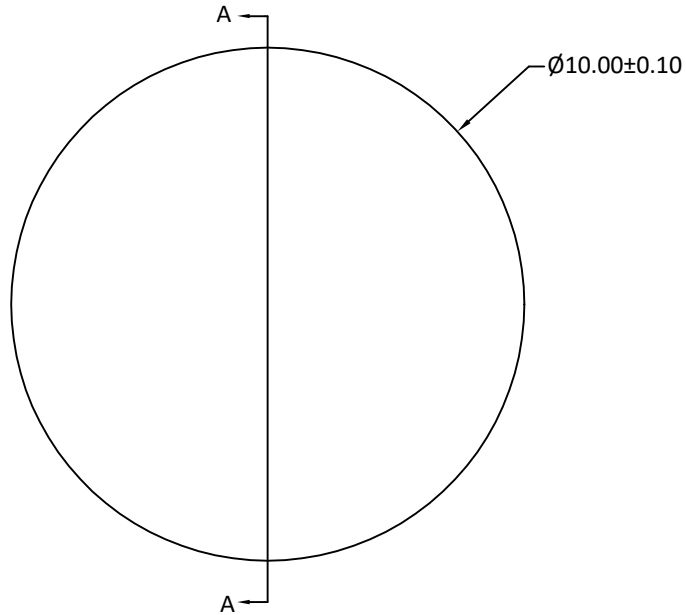



RADIUS	R TOL	POWER	IRRG	CA	DIA	DIA TOL	MATERIAL	INDEX	CT	CT TOL
5.00	±0.05	-	-	-	10.00	+0/-0.10	Silicon		6.10	±0.05
Plano	-	-	-	-						



SECTION A-A

Notes:

1. ALL DIMENSIONS IN MM
2. MATERIAL: HRFZ-SILICON, RESISTANCE  $> 10k\Omega \cdot \text{cm}$
3. S1: HYPER-HEMISPHERICAL, POLISHED
4. S2: FLAT, POLISHED
5. CLEAR APERTURE:  $\geq 90\%$  OF DIAMETER
6. SURFACE QUALITY: 60-40 SCRATCH-DIG
7. THICKNESS TOLERANCE: 0.05mm
8. SURFACE ACCURACY:  $\pm 0.01\text{mm}$  DEVIATION FROM IDEAL SPHERE AND PLANE

UNLESS OTHERWISE SPECIFIED:		NAME	DATE		
DIMENSIONS ARE IN mm TOLERANCES: FRACTIONAL $\pm$ ANGULAR: $\pm 3$ ARC MIN TWO PLACE DECIMAL: $\pm 0.10$ THREE PLACE DECIMAL: $\pm 0.05$		DRAWN	Sally Song		
INTERPRET GEOMETRIC TOLERANCING PER:		CHECK			10.00 DIAMETER, 6.10 THICKNESS TERAHERTZ SILICON HYPER BALL LENS
MATERIAL SILICON		ENG APPR.			
FINISH		MFG APPR.			SIZE DWG.NO.
DO NOT SCALE DRAWING		QA			<b>A</b> CLZ-Hyper-10-610
PROJECT NO.		COMMENTS			REV <b>0</b>
		SCALE:	WEIGHT:	SHEET 1 OF 1	