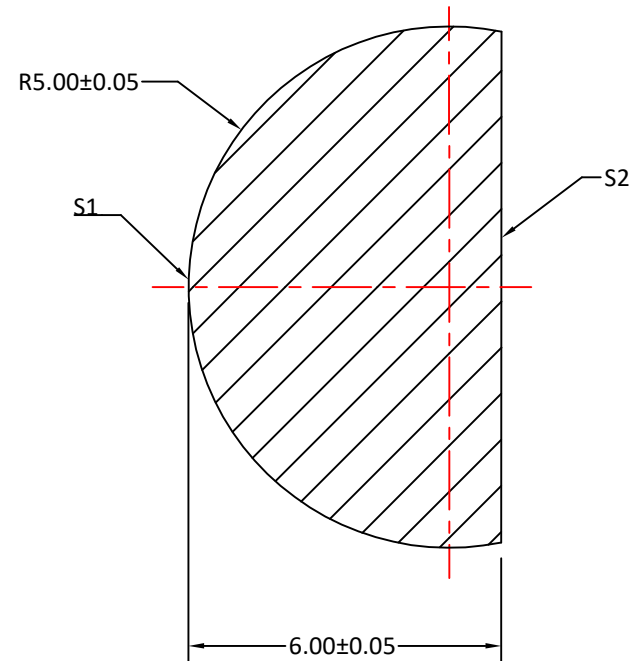
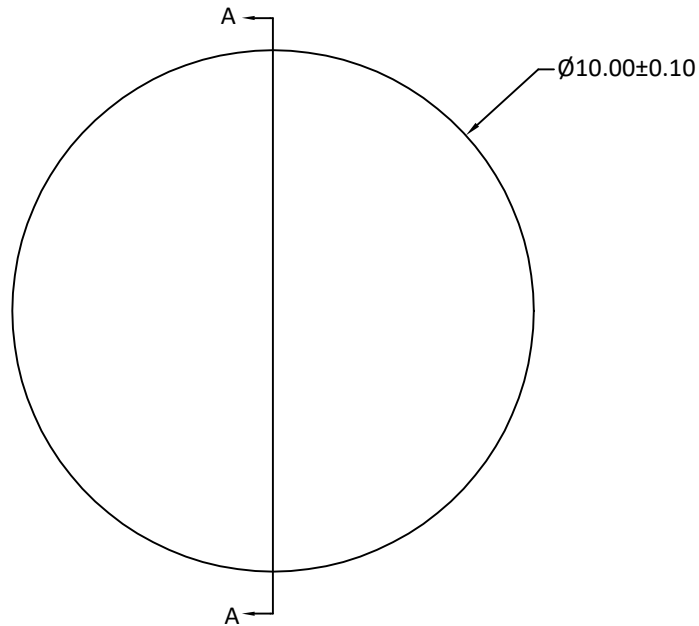


RADIUS	R TOL	POWER	IRRG	CA	DIA	DIA TOL	MATERIAL	INDEX	CT	CT TOL
5.00	±0.05	-	-	-	10.00	+0/-0.10	Silicon		6.00	±0.05
Plano	-	-	-	-						



SECTION A-A

Notes:

1. ALL DIMENSIONS IN MM
2. MATERIAL: HRFZ-SILICON, RESISTANCE > 10kΩ\*cm
3. S1: HYPER-HEMISPHERICAL, POLISHED
4. S2: FLAT, POLISHED
5. CLEAR APERTURE: ≥90% OF DIAMETER
6. SURFACE QUALITY: 60-40 SCRATCH-DIG
7. THICKNESS TOLERANCE: 0.05mm
8. SURFACE ACCURACY: ±0.01mm DEVIATION FROM IDEAL SPHERE AND PLANE

UNLESS OTHERWISE SPECIFIED:		NAME	DATE	CLZ OPTICAL MANUFACTURER FROM CHINA	
DIMENSIONS ARE IN mm TOLERANCES: FRACTIONAL ± ANGULAR: ±3 ARC MIN TWO PLACE DECIMAL: ±0.10 THREE PLACE DECIMAL: ±0.05	DRAWN	Sally Song	12.04.24	TITLE:	
	CHECK			10.00 DIAMETER, 6.00 THICKNESS TERAHERTZ SILICON HYPER BALL LENS	
	ENG APPR.			SIZE	DWG.NO.
	MFG APPR.			<b>A</b>	CLZ-Hyper-10-600
INTERPRET GEOMETRIC TOLERANCING PER:	QA			REV	<b>0</b>
MATERIAL SILICON	COMMENTS				
FINISH					
DO NOT SCALE DRAWING	PROJECT NO.		SCALE:	WEIGHT:	SHEET 1 OF 1