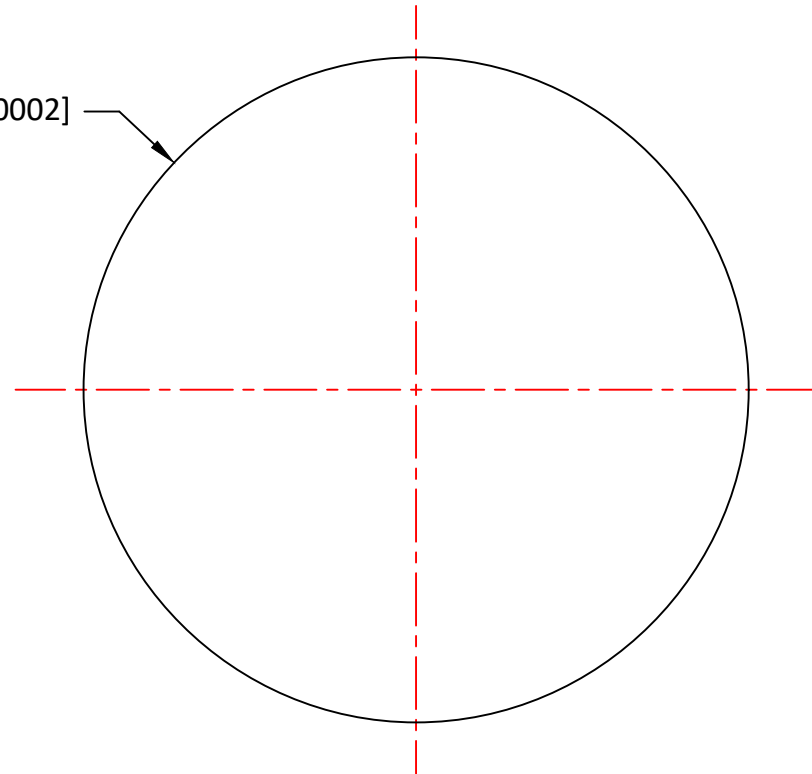



Notes:

1. ALL DIMENSIONS IN MM
2. MATERIAL: H-K9L
3. FINISH: POLISH
4. BALL SPHERICITY: 0.01mm
5. COATING: UNCOATED

$\varnothing 1.27 \pm 0.005$ [$\varnothing 0.05 \pm 0.0002$]



UNLESS OTHERWISE SPECIFIED:		NAME	DATE			
DIMENSIONS ARE IN mm		DRAWN	Sally Song			12.23.24
TOLERANCES:		CHECK			TITLE: 1.27 DIAMETER, H-K9L BALL LENS	
FRACTIONAL ±		ENG APPR.				
ANGULAR: ±3 ARC MIN		MFG APPR.				
TWO PLACE DECIMAL: ±0.10		QA			SIZE A DWG.NO. L-BL0101270 REV 0	
THREE PLACE DECIMAL: ±0.05		COMMENTS				
INTERPRET GEOMETRIC TOLERANCING PER:						
MATERIAL H-K9L						
FINISH						
DO NOT SCALE DRAWING		PROJECT NO.		SCALE:	WEIGHT:	SHEET 1 OF 1