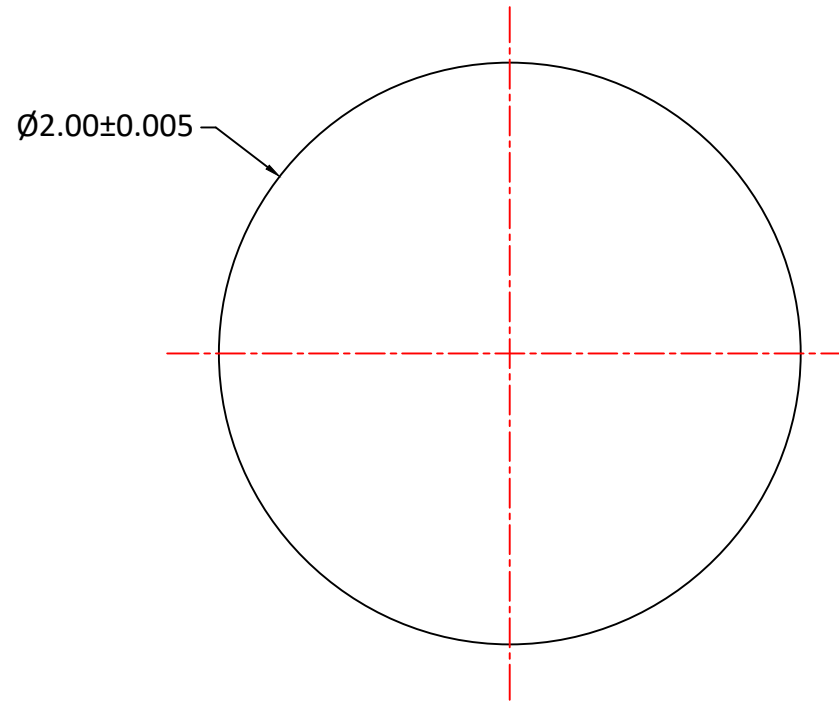



Notes:

1. ALL DIMENSIONS IN MM
2. MATERIAL: H-K9L
3. FINISH: POLISH
4. BALL SPHERICITY: 0.005mm
5. COATING: UNCOATED



UNLESS OTHERWISE SPECIFIED:		NAME	DATE			
DIMENSIONS ARE IN mm TOLERANCES: FRACTIONAL ± ANGULAR: ±3 ARC MIN TWO PLACE DECIMAL: ±0.10 THREE PLACE DECIMAL: ±0.05		DRAWN	Sally Song			12.23.24
INTERPRET GEOMETRIC TOLERANCING PER:		CHECK			TITLE: 2.00 DIAMETER, H-K9L BALL LENS	
MATERIAL H-K9L		ENG APPR.				
FINISH		MFG APPR.				
DO NOT SCALE DRAWING		COMMENTS		SIZE	DWG.NO.	REV
PROJECT NO.				A	L-BL0102000	0
		SCALE:	WEIGHT:	SHEET 1 OF 1		