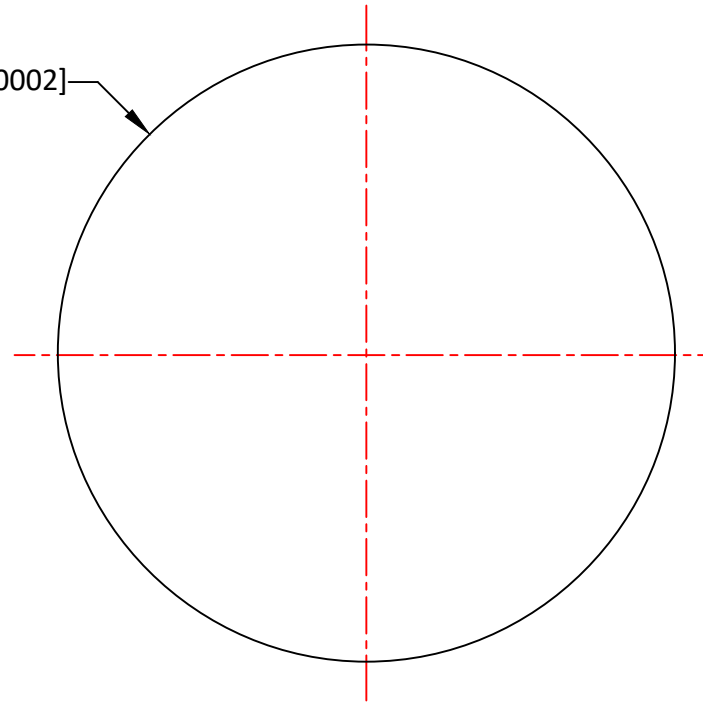



Notes:

1. ALL DIMENSIONS IN MM
2. MATERIAL: H-K9L
3. FINISH: POLISH
4. BALL SPHERICITY: 0.01mm
5. COATING: UNCOATED

$\varnothing 6.35 \pm 0.005$ [$\varnothing 0.25 \pm 0.0002$]



UNLESS OTHERWISE SPECIFIED:		NAME	DATE		
DIMENSIONS ARE IN mm TOLERANCES: FRACTIONAL ± ANGULAR: ±3 ARC MIN TWO PLACE DECIMAL: ±0.10 THREE PLACE DECIMAL: ±0.05		DRAWN	Sally Song		
INTERPRET GEOMETRIC TOLERANCING PER:		CHECK			TITLE: 6.35 DIAMETER, H-K9L BALL LENS
MATERIAL H-K9L		ENG APPR.			
FINISH		MFG APPR.			
DO NOT SCALE DRAWING		QA			SIZE A DWG.NO. L-BL0106350 REV 0
PROJECT NO.		COMMENTS		SCALE:	WEIGHT:
				SHEET 1 OF 1	