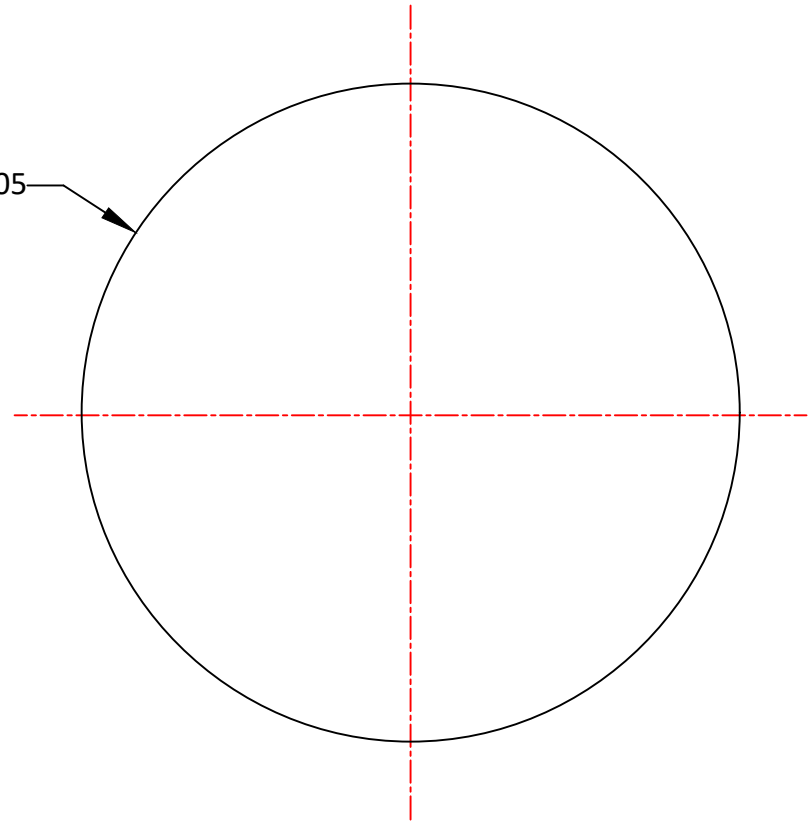



Notes:

1. ALL DIMENSIONS IN MM
2. MATERIAL: H-K9L
3. FINISH: POLISH
4. BALL SPHERICITY: 0.01mm
5. COATING: UNCOATED

Ø11.00±0.005



UNLESS OTHERWISE SPECIFIED:		NAME	DATE		
DIMENSIONS ARE IN mm TOLERANCES: FRACTIONAL ± ANGULAR: ±3 ARC MIN TWO PLACE DECIMAL: ±0.10 THREE PLACE DECIMAL: ±0.05		DRAWN	Sally Song		
INTERPRET GEOMETRIC TOLERANCING PER:		CHECK			TITLE: 11.00 DIAMETER, H-K9L BALL LENS
MATERIAL H-K9L		ENG APPR.			
FINISH		MFG APPR.			
DO NOT SCALE DRAWING		COMMENTS	SIZE A DWG.NO. L-BL0111000		REV 0
		PROJECT NO.	SCALE:	WEIGHT:	SHEET 1 OF 1