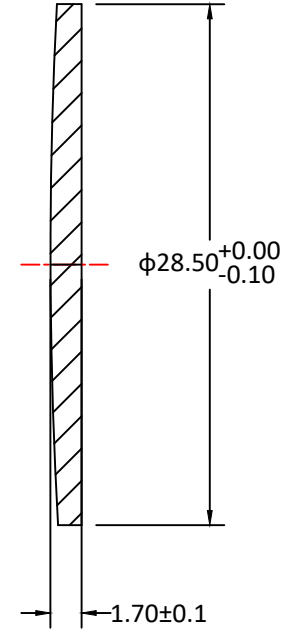
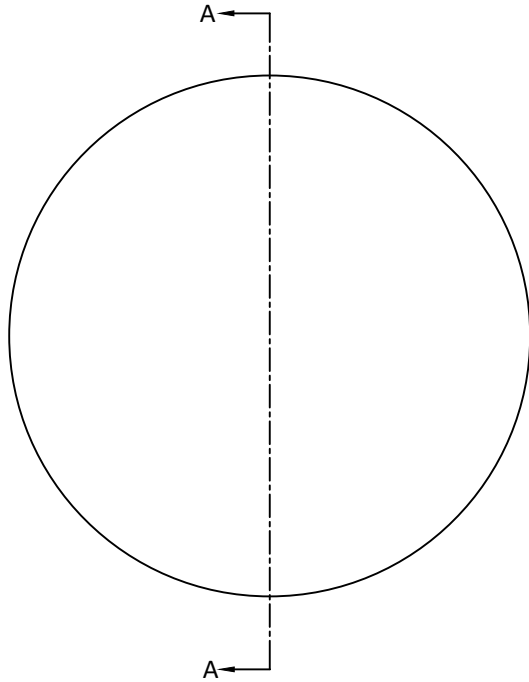


RADIUS	R TOL	POWER	IRRG	CA
261.54 CX	±1.30	5	1	90%
Plano	-	5	1	90%


DIA	DIA TOL	MATERIAL	INDEX	CT	CT TOL
28.50	+0/-0.10	H-K9L	517642	1.70	±0.10



SECTION A-A

Notes:

1. ALL DIMENSIONS IN MM
2. TOLERANCE UNLESS SPECIFIED  $\pm 0.10$
3. MATERIAL: GRADE B, FA PER MIL-G-174, CDGM OR EQUIVALENT, ROHS COMPLIANT
4. MANUFACTURE PER MIL-PRF-13830
5. POLISH TO TESTPLATE WITHIN POWER AND IRREGULARITY INDICATED (FRINGES)
6. FOCAL LENGTH(EFL):  $500.00 \pm 1\%$
7. SURFACE QUALITY : 40-20 SCRATCH-DIG
8. CHAMFER EDGES:  $0.5 \times 45^\circ$  MAX UNLESS SPECIFIED
9. CENTRATION TOLERANCE: 2.0' MINUTES MAX
10. COATING: S1 & S2:  $\frac{1}{4}$  WAVE MgF2 @ 550nm R(AVG) < 1.75% FROM 400-700nm H-K9L

UNLESS OTHERWISE SPECIFIED:		NAME	DATE		
DIMENSIONS ARE IN mm TOLERANCES: FRACTIONAL $\pm$ ANGULAR: $\pm 3$ ARC MIN TWO PLACE DECIMAL: $\pm 0.10$ THREE PLACE DECIMAL: $\pm 0.05$		DRAWN	Sally Song		
INTERPRET GEOMETRIC TOLERANCING PER:		CHECK			TITLE: DIAMETER 28.50MM, EFL 500.00MM, H-K9L, MgF2 COATED, PLANO-CONVEX LENS
MATERIAL H-K9L		ENG APPR.			
FINISH		MFG APPR.			
DO NOT SCALE DRAWING		QA	Ann Chen	12.17.24	SIZE <b>A</b>
PROJECT NO.		COMMENTS		DWG.NO. L-PX002050028Y	REV <b>0</b>
		SCALE:		WEIGHT:	SHEET 1 OF 1