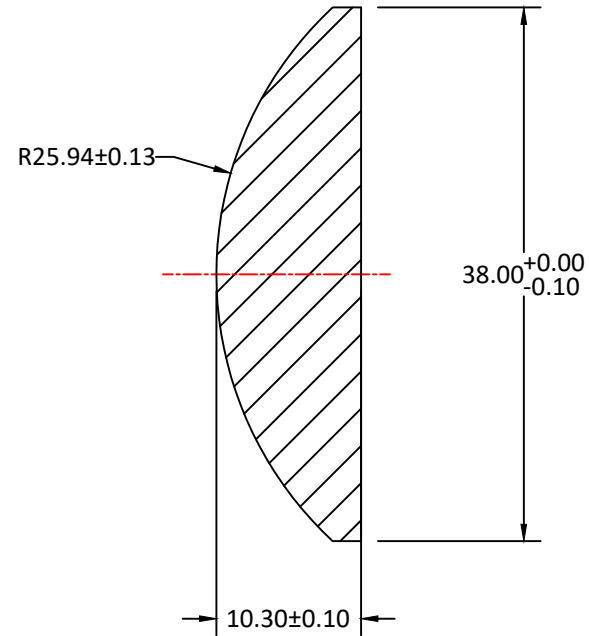
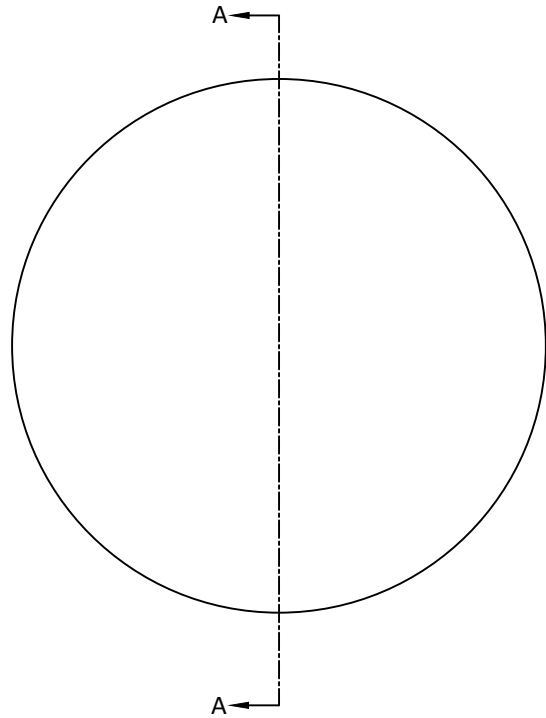


RADIUS	R TOL	POWER	IRRG	CA
25.94 CX	±0.13	3	1	90%
Plano	-	3	1	90%


DIA	DIA TOL	MATERIAL	INDEX	CT	CT TOL
38.00	+0/-0.10	H-K9L	517642	10.3	±0.10



SECTION A-A

Notes:

1. ALL DIMENSIONS IN MM
2. TOLERANCE UNLESS SPECIFIED  $\pm 0.10$
3. MATERIAL: GRADE B, FA PER MIL-G-174, CDGM OR EQUIVALENT, ROHS COMPLIANT
4. MANUFACTURE PER MIL-PRF-13830
5. POLISH TO TESTPLATE WITHIN POWER AND IRREGULARITY INDICATED (FRINGES)
6. FOCAL LENGTH(EFL):  $50.00 \pm 2\%$
7. SURFACE QUALITY : 40-20 SCRATCH-DIG
8. CHAMFER EDGES:  $0.5 \times 45^\circ$  MAX UNLESS SPECIFIED
9. CENTRATION TOLERANCE: 1.0' MINUTES MAX
10. COATING: S1 & S2:  $\frac{1}{4}$  WAVE MgF2 @ 550nm R(AVG) < 1.75% FROM 400-700nm H-K9L

UNLESS OTHERWISE SPECIFIED:		NAME	DATE				
DIMENSIONS ARE IN MM		DRAWN	Eva Du			7.15.24	
TOLERANCES:		CHECK	Sally Song	7.20.24	TITLE: DIAMETER 38MM, EFL 50.00MM, H-K9L, MgF2 COATED, PLANO-CONVEX LENS		
FRACTIONAL $\pm$		ENG APPR.					
ANGULAR: $\pm 3$ ARC MIN		MFG APPR.					
TWO PLACE DECIMAL: $\pm 0.10$		QA	Ann Chen	12.17.24			
THREE PLACE DECIMAL: $\pm 0.05$		COMMENTS					
INTERPRET GEOMETRIC TOLERANCING PER:					SIZE	DWG.NO.	REV
MATERIAL H-K9L					<b>A</b>	<b>L-PX0020050038</b>	<b>0</b>
FINISH							
DO NOT SCALE DRAWING		PROJECT NO.		SCALE:	WEIGHT:	SHEET 1 OF 1	