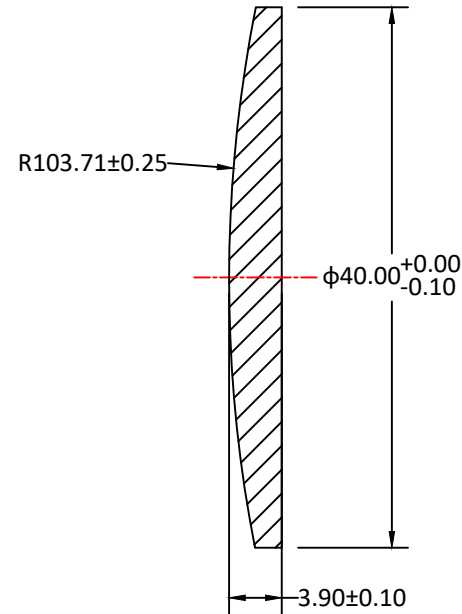
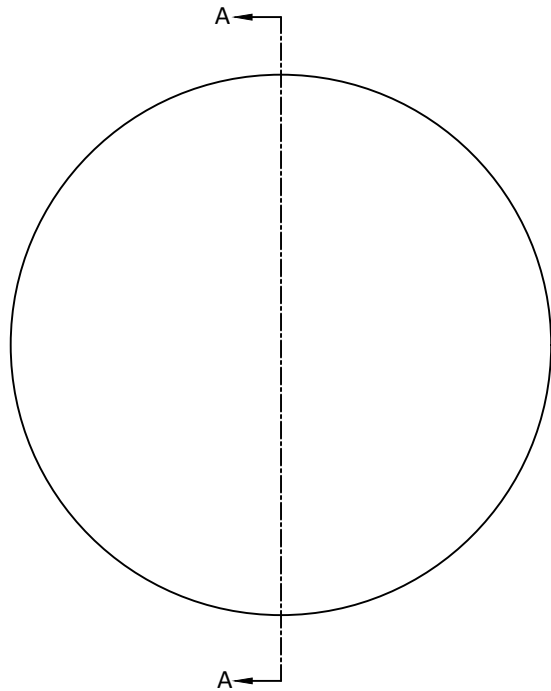



RADIUS	R TOL	POWER	IRRG	CA	DIA	DIA TOL	MATERIAL	INDEX	CT	CT TOL
103.71 CX	±0.25	3	1	90%	40.00	+0/-0.10	H-K9L	517642	3.90	±0.10
Plano	-	3	1	90%						



SECTION A-A

Notes:

- ALL DIMENSIONS IN MM
- TOLERANCE UNLESS SPECIFIED ± 0.10
- MATERIAL: GRADE B, FA PER MIL-G-174, CDGM OR EQUIVALENT, ROHS COMPLIANT
- MANUFACTURE PER MIL-PRF-13830
- POLISH TO TESTPLATE WITHIN POWER AND IRREGULARITY INDICATED (FRINGES)
- FOCAL LENGTH(EFL): 200.00±1%
- SURFACE QUALITY : 40-20 SCRATCH-DIG
- CHAMFER EDGES: 0.5×45° TYPICAL
- CENTRATION TOLERANCE: 1.0' MINUTES MAX
- COATING: S1 & S2: ¼ WAVE MgF2 @ 550nm R(AVG) < 1.75% FROM 400-700nm H-K9L

UNLESS OTHERWISE SPECIFIED:		NAME	DATE		
DIMENSIONS ARE IN MM TOLERANCES: FRACTIONAL ± ANGULAR: ±3 ARC MIN TWO PLACE DECIMAL: ±0.10 THREE PLACE DECIMAL: ±0.05		DRAWN	Sally Song		
INTERPRET GEOMETRIC TOLERANCING PER:		CHECK			TITLE: DIAMETER 40MM, EFL 200.00MM, H-K9L, MgF2 COATED, PLANO-CONVEX LENS
MATERIAL H-K9L		ENG APPR.			
FINISH		MFG APPR.			SIZE A
DO NOT SCALE DRAWING		QA	Ann Chen	12.17.24	
PROJECT NO.		COMMENTS			REV 0
		SCALE:	WEIGHT:	SHEET 1 OF 1	