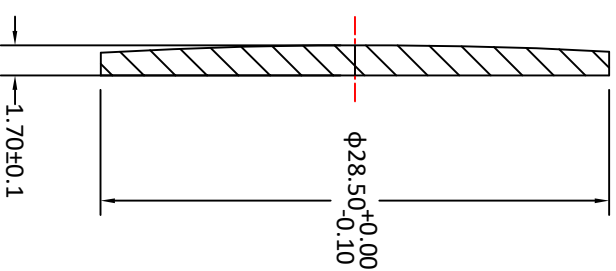
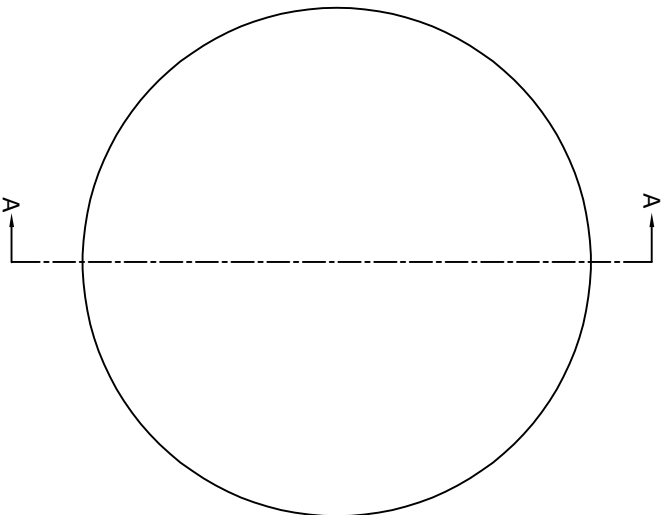


RADIUS	R TOL	POWER	IRRG	CA
261.54 CX	±1.30	5	1	90%
Plano	-	5	1	90%

DIA	DIA TOL	MATERIAL	INDEX	CT	CT TOL
28.50	+0/-0.10	H-K9L	517642	1.70	±0.10



SECTION A-A

- Notes:
1. ALL DIMENSIONS IN MM
 2. TOLERANCE UNLESS SPECIFIED ± 0.10
 3. MATERIAL: GRADE B, FA PER MIL-G-174, CDGM OR EQUIVALENT, ROHS COMPLIANT
 4. MANUFACTURE PER MIL-PRF-13830
 5. POLISH TO TESTPLATE WITHIN POWER AND IRREGULARITY INDICATED (FRINGES)
 6. FOCAL LENGTH(EFL): 500.00±1%
 7. SURFACE QUALITY : 40-20 SCRATCH-DIG
 8. CHAMFER EDGES: 0.5×45° MAX UNLESS SPECIFIED
 9. CENTRATION TOLERANCE: 2.0' MINUTES MAX
 10. COATING: S1 & S2: Rayg<0.35% @ 420-680nm @ 0° AOI

UNLESS OTHERWISE SPECIFIED:			
DIMENSIONS ARE IN mm		DRAWN	NAME
TOLERANCES:		Sally Song	DATE
FRACTIONAL ±		CHECK	7.10.24
ANGULAR: ±3 ARC MIN		ENG APPR.	
TWO PLACE DECIMAL: ±0.10		MFG APPR.	
THREE PLACE DECIMAL: ±0.05		QA	Ann Chen
INTERPRET GEOMETRIC TOLERANCING PER:			12.17.24
MATERIAL H-K9L		COMMENTS	
FINISH			
DO NOT SCALE DRAWING		PROJECT NO.	
SCALE:	SIZE	DWG. NO.	TITLE:
	A	L-PX003050028Y	DIAMETER 28.50MM, EFL 500.00MM, H-K9L, MgF2 COATED, PLANO-CONVEX LENS
WEIGHT:	REV		
	0		
SHEET 1 OF 1			

