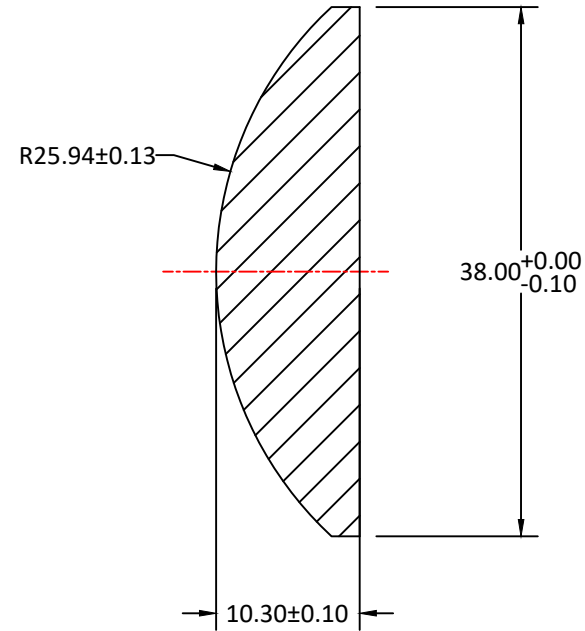
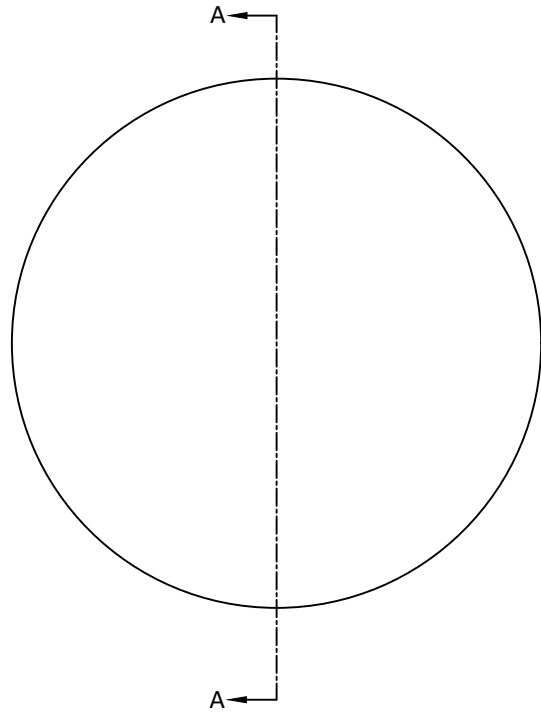



RADIUS	R TOL	POWER	IRRG	CA	DIA	DIA TOL	MATERIAL	INDEX	CT	CT TOL
25.94 CX	±0.13	3	1	90%	38.00	+0/-0.10	H-K9L	517642	10.3	±0.10
Plano	-	3	1	90%						



SECTION A-A

Notes:

- ALL DIMENSIONS IN MM
- TOLERANCE UNLESS SPECIFIED ± 0.10
- MATERIAL: GRADE B, FA PER MIL-G-174, CDGM OR EQUIVALENT, ROHS COMPLIANT
- MANUFACTURE PER MIL-PRF-13830
- POLISH TO TESTPLATE WITHIN POWER AND IRREGULARITY INDICATED (FRINGES)
- FOCAL LENGTH(EFL): 50.00±2%
- SURFACE QUALITY : 40-20 SCRATCH-DIG
- CHAMFER EDGES: 0.5×45°MAX UNLESS SPECIFIED
- CENTRATION TOLERANCE: 1.0' MINUTES MAX
- COATING: S1 & S2:Ravg<0.35% @ 420-680nm @ 0° AOI

UNLESS OTHERWISE SPECIFIED:		NAME	DATE	
DIMENSIONS ARE IN MM TOLERANCES: FRACTIONAL ± ANGULAR: ±3 ARC MIN TWO PLACE DECIMAL: ±0.10 THREE PLACE DECIMAL: ±0.05	DRAWN	Eva Du	7.15.24	
	CHECK	Sally Song	7.20.24	
	ENG APPR.			
	MFG APPR.			
INTERPRET GEOMETRIC TOLERANCING PER:	QA	Ann Chen	12.17.24	TITLE: DIAMETER 38MM, EFL 50.00MM, H-K9L, MgF2 COATED, PLANO-CONVEX LENS
MATERIAL H-K9L	COMMENTS		SIZE A DWG.NO. L-PX0030050038 REV 0	
FINISH				SCALE: WEIGHT: SHEET 1 OF 1
DO NOT SCALE DRAWING	PROJECT NO.			