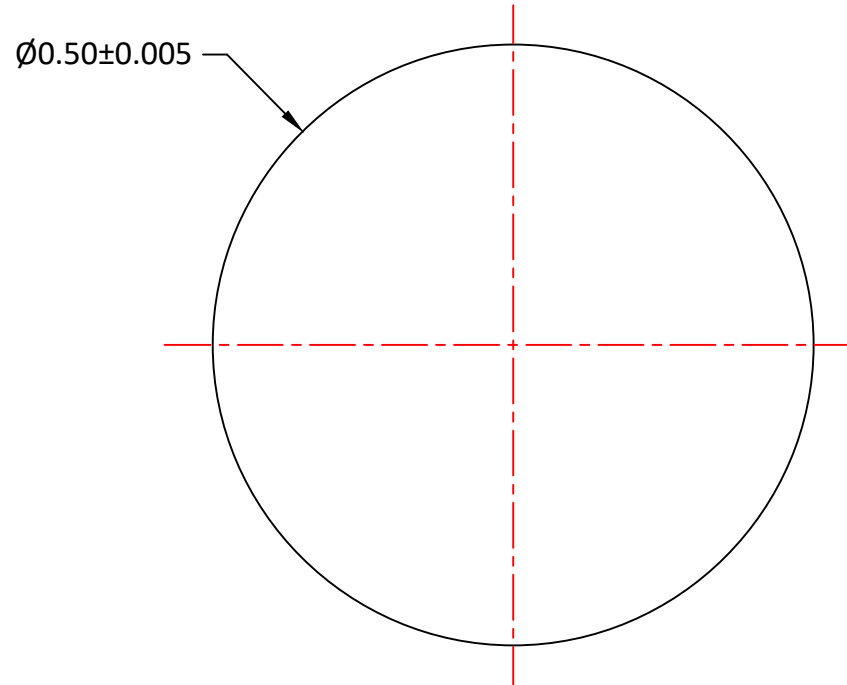



Notes:

1. ALL DIMENSIONS IN MM
2. MATERIAL: OPTICAL GLASS H-ZLAF68
3. FINISH: POLISH
4. BALL SPHERICITY: 0.005mm
5. COATING: UNCOATED



UNLESS OTHERWISE SPECIFIED:		NAME	DATE			
DIMENSIONS ARE IN mm TOLERANCES: FRACTIONAL ± ANGULAR: ±3 ARC MIN TWO PLACE DECIMAL: ±0.10 THREE PLACE DECIMAL: ±0.05		DRAWN	Sally Song			12.23.24
INTERPRET GEOMETRIC TOLERANCING PER:		CHECK			TITLE: 0.50 DIAMETER, H-ZLAF68 BALL LENS	
MATERIAL H-ZLAF68		ENG APPR.				
FINISH		MFG APPR.				
DO NOT SCALE DRAWING		PROJECT NO.		SCALE:	WEIGHT:	SHEET 1 OF 1
		COMMENTS		SIZE	DWG.NO.	REV
				<b>A</b>	L-BL1200500	<b>0</b>