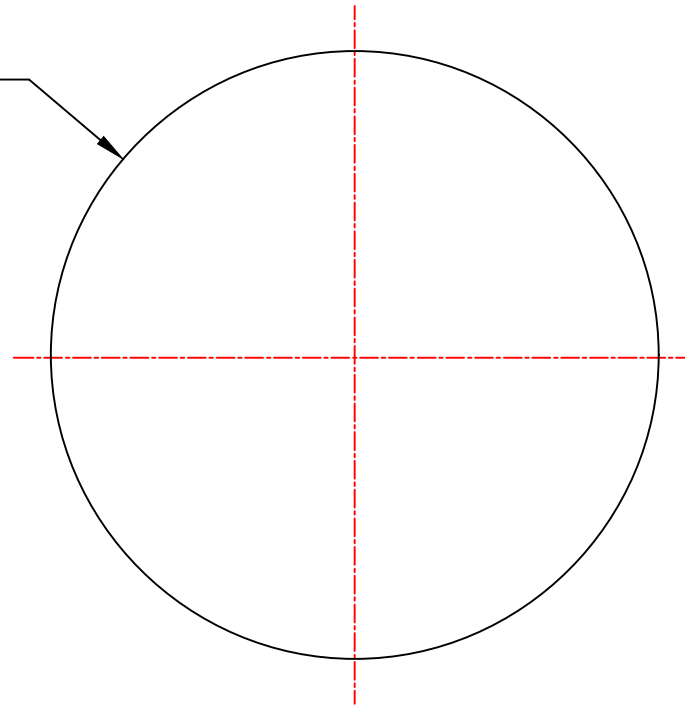



Ø12.70±0.005 [Ø0.50±0.0002]



Notes:

1. ALL DIMENSIONS IN MM
2. MATERIAL: H-K9L
3. FINISH: POLISH
4. BALL SPHERICITY: 0.01mm
5. COATING: UNCOATED

UNLESS OTHERWISE SPECIFIED:		NAME	DATE	
DIMENSIONS ARE IN mm TOLERANCES: FRACTIONAL ± ANGULAR: ±3 ARC MIN TWO PLACE DECIMAL: ±0.10 THREE PLACE DECIMAL: ±0.05		DRAWN	12.23.24	
INTERPRET GEOMETRIC TOLERANCING PER:		CHECK		TITLE: 12.70 DIAMETER, H-K9L BALL LENS
MATERIAL H-K9L		ENG APPR.		
FINISH		MFG APPR.		
DO NOT SCALE DRAWING		COMMENTS		SIZE A DWG.NO. L-BL0112700 REV 0
PROJECT NO.		SCALE:	WEIGHT:	SHEET 1 OF 1