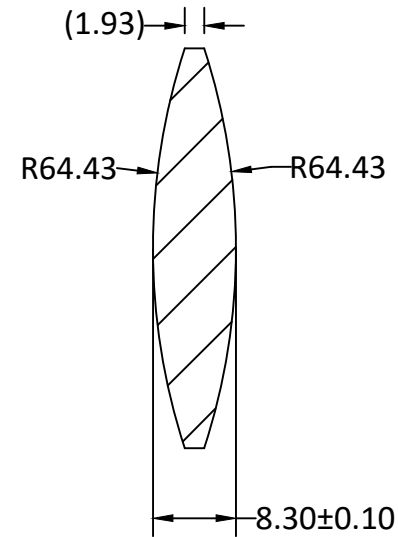
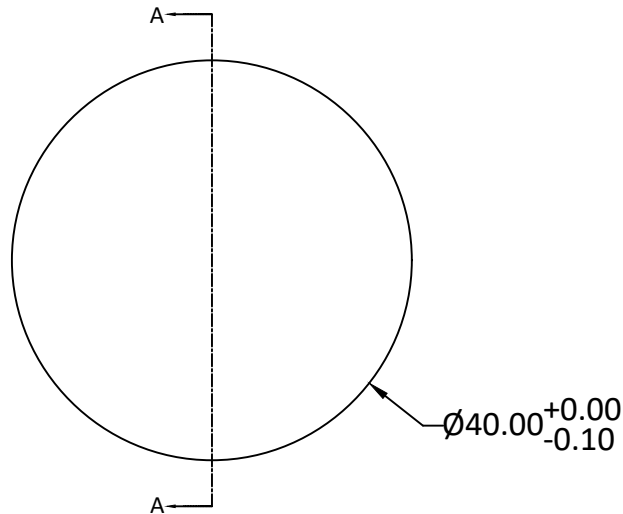


RADIUS	R TOL	POWER	IRRG	CA	DIA	DIA TOL	MATERIAL	INDEX	CT	CT TOL
64.43 CX	±0.16	3	1	90%	40.00	+0/-0.10	H-K9L	517642	8.30	±0.10
64.43 CX	±0.16	3	1	90%						



SECTION A-A

Notes:

1. ALL DIMENSIONS IN MM
2. TOLERANCE UNLESS SPECIFIED ± 0.10
3. MATERIAL: GRADE B, FA PER MIL-G-174, CDGM OR EQUIVALENT, ROHS COMPLIANT
4. MANUFACTURE PER MIL-PRF-13830
5. POLISH TO TESTPLATE WITHIN POWER AND IRREGULARITY INDICATED (FRINGES)
6. FOCAL LENGTH(EFL): 63.5mm $\pm 2\%$
7. SURFACE QUALITY : 60-40 SCRATCH-DIG
8. CHAMFER EDGES: 0.5 \times 45°MAX UNLESS SPECIFIED
9. CENTRATION TOLERANCE:3.0' MINUTES MAX
10. COATING: S1 & S2: Ravg 0.8% @ 400-950nm @ 0° AOI

UNLESS OTHERWISE SPECIFIED:		NAME	DATE	CIZ OPTICAL MANUFACTURER FROM CHINA		
DIMENSIONS ARE IN mm TOLERANCES: FRACTIONAL \pm ANGULAR: ± 3 ARC MIN TWO PLACE DECIMAL: ± 0.10 THREE PLACE DECIMAL: ± 0.05	DRAWN	Sally Song	03.26.25	TITLE: DIAMETER 40MM, EFL 63.5MM, H-K9L BICONVEX LENS		
	CHECK					
	ENG APPR.					
	MFG APPR.					
INTERPRET GEOMETRIC TOLERANCING PER:	QA	Ann Chen	01.18.25	SIZE	DWG.NO.	
MATERIAL H-K9L	COMMENTS			A	L-DX0040064040	REV 0
FINISH				SCALE:	WEIGHT:	SHEET 1 OF 1
DO NOT SCALE DRAWING	PROJECT NO.					