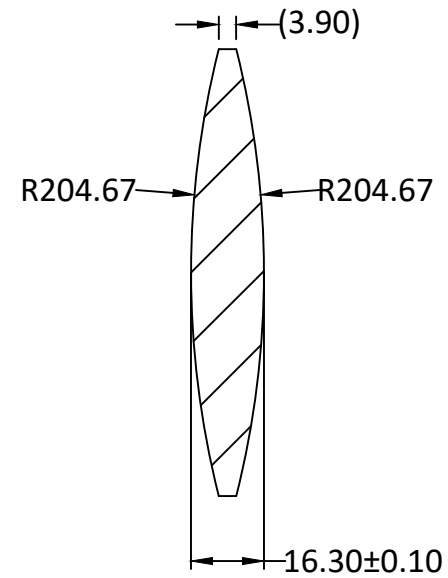
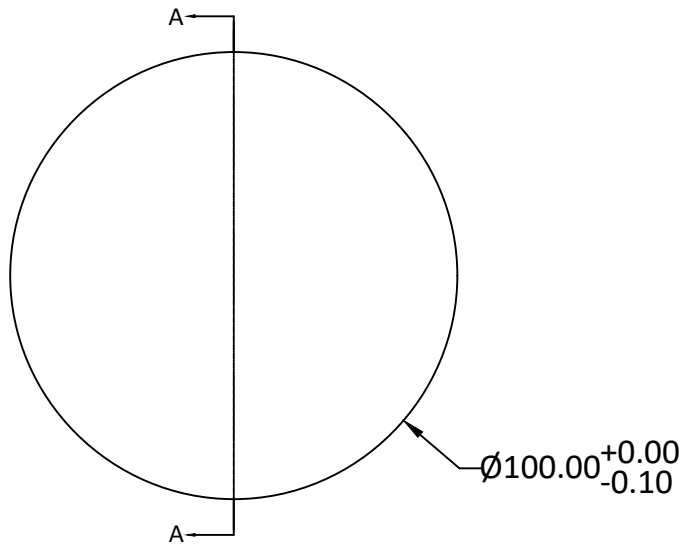



RADIUS	R TOL	POWER	IRRG	CA	DIA	DIA TOL	MATERIAL	INDEX	CT	CT TOL
204.67 CX	±0.41	3	1	90%	100.00	+0/-0.10	H-K9L	517642	16.30	±0.10
204.67 CX	±0.41	3	1	90%						



SECTION A-A

Notes:

1. ALL DIMENSIONS IN MM
2. TOLERANCE UNLESS SPECIFIED ± 0.10
3. MATERIAL: GRADE B, FA PER MIL-G-174, CDGM OR EQUIVALENT, ROHS COMPLIANT
4. MANUFACTURE PER MIL-PRF-13830
5. POLISH TO TESTPLATE WITHIN POWER AND IRREGULARITY INDICATED (FRINGES)
6. FOCAL LENGTH(EFL): 200mm±2%
7. SURFACE QUALITY : 60-40 SCRATCH-DIG
8. CHAMFER EDGES: 0.5×45°MAX UNLESS SPECIFIED
9. CENTRATION TOLERANCE:3.0' MINUTES MAX
10. COATING: S1 & S2: Ravg 0.8% @ 400-950nm @ 0° AOI

UNLESS OTHERWISE SPECIFIED:		NAME	DATE	
DIMENSIONS ARE IN mm TOLERANCES: FRACTIONAL ± ANGULAR: ±3 ARC MIN TWO PLACE DECIMAL: ±0.10 THREE PLACE DECIMAL: ±0.05	DRAWN	Sally Song	03.26.25	
	CHECK			
	ENG APPR.			
INTERPRET GEOMETRIC TOLERANCING PER:	MFG APPR.			TITLE: DIAMETER 100MM, EFL 200MM, H-K9L BICONVEX LENS
MATERIAL H-K9L	QA	Ann Chen	01.18.25	SIZE A
FINISH	COMMENTS			DWG.NO. L-DX0040200100
DO NOT SCALE DRAWING	PROJECT NO.			REV 0
		SCALE:	WEIGHT:	SHEET 1 OF 1